

PART SE 1/4 SEC. 23, T5N, R2W, S.L.B. & M.  
LINDA VISTA SUBDIVISION

133

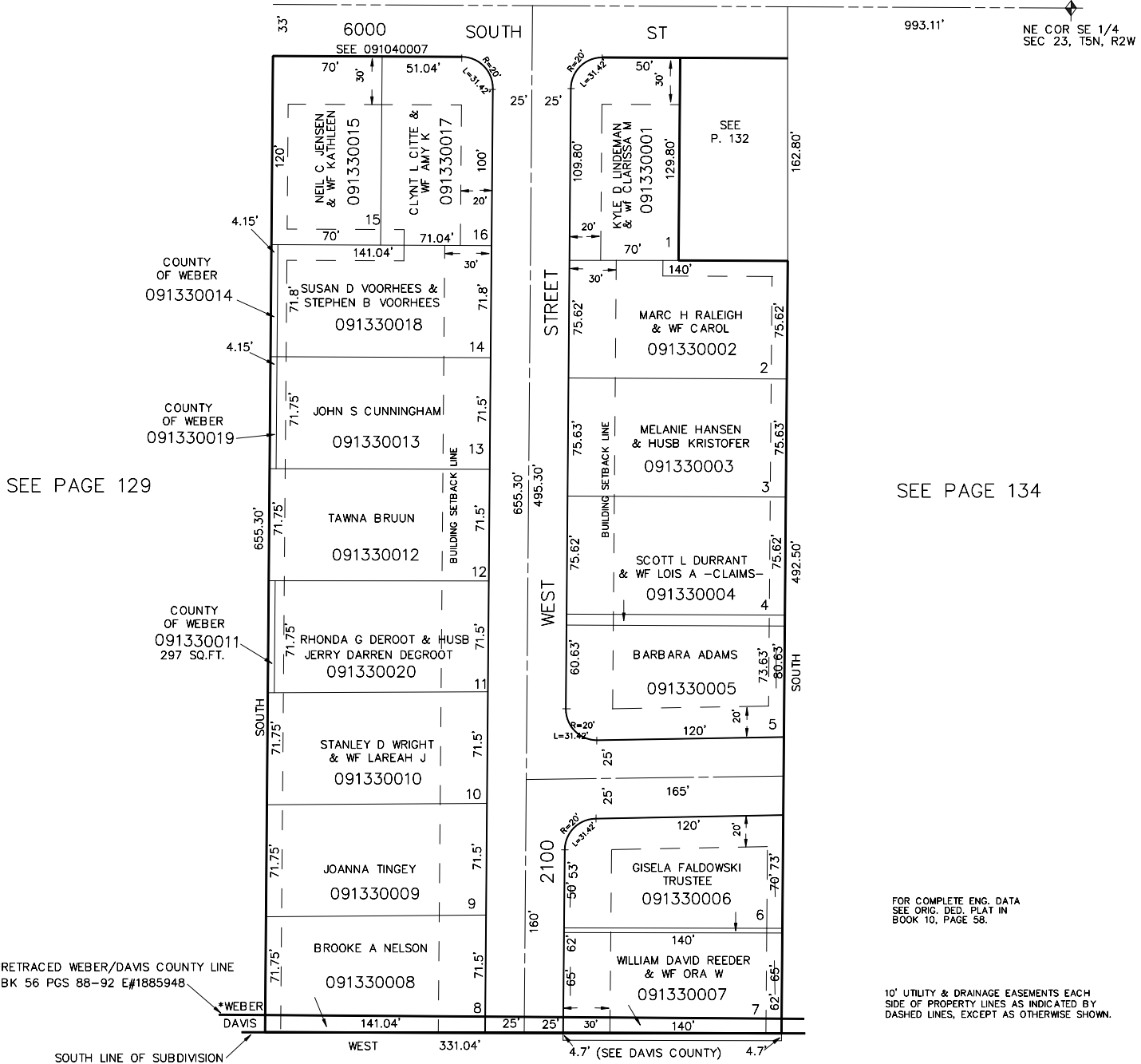
ROY CITY

TAXING UNIT: 41

SCALE 1" TO 50'

SEE PAGE 105

NE COR SE 1/4  
SEC 23, T5N, R2W



SEE PAGE 129

SEE PAGE 134

\*RETRACED WEBER/DAVIS COUNTY LINE  
BK 56 PGS 88-92 E#1885948

\*WEBER

SOUTH LINE OF SUBDIVISION